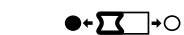
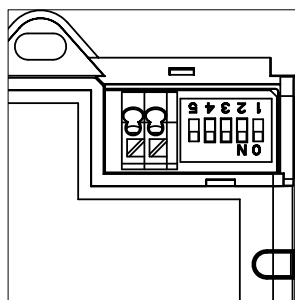
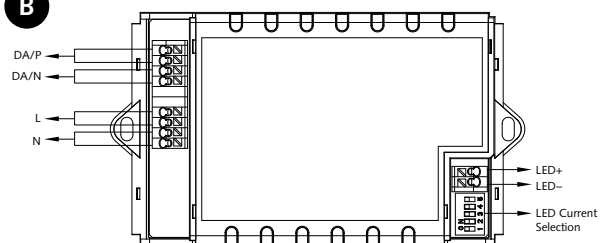
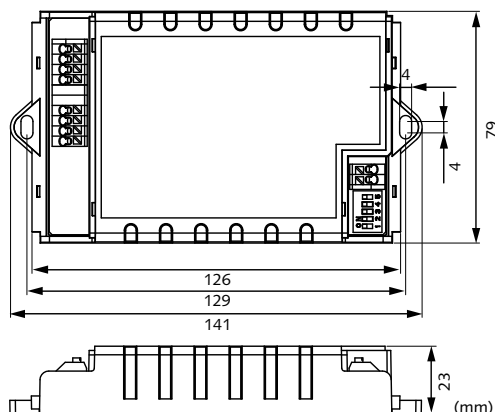
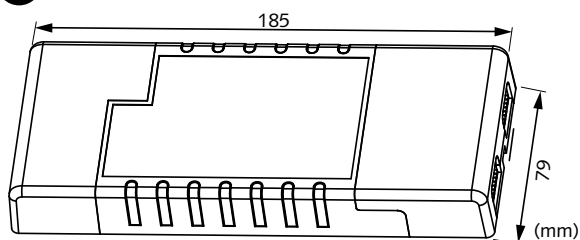


A HED6045/D2, 45W

mA	1	2	3	4	5
1050mA	●	●	●	●	●
1000mA	●	○	●	●	○
950mA	●	○	○	●	○
900mA	●	○	○	○	○
800mA	●	○	○	○	○
700mA	●	○	○	○	○
600mA	●	○	○	○	○
500mA	●	○	○	○	○
350mA	○	○	○	○	○



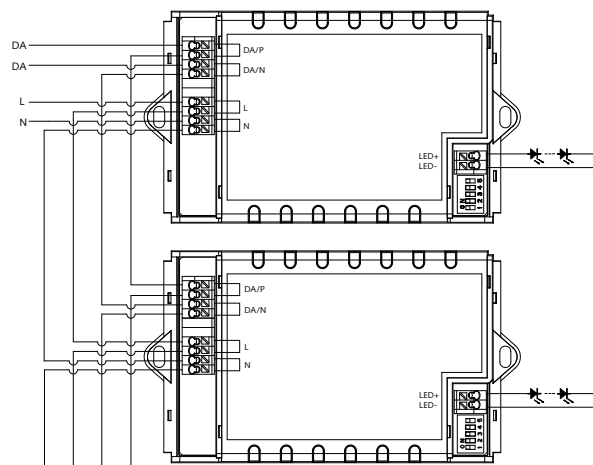
Note: In order for the driver to work with LED panels with art.no 7099530-33, please set the dip switches to 900mA.

B**C****D**

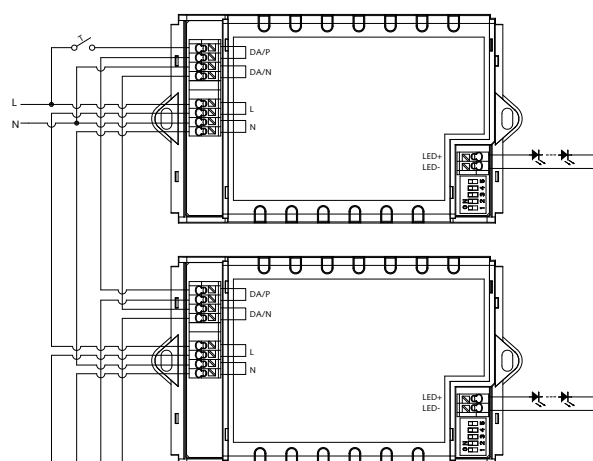
Additional cap for stand-alone installation

E WIRING DIAGRAM

DALI



Switch-Dim



SELV



Dimmable LED Driver

Model: HED6045/D2
70 137 20, 99 521 29

IMPORTANT: Please read the instruction manual carefully prior to installation and keep it for future reference.



Note! Must be connected to earth to obtain the correct function.

FEATURES

- DALI-2 with DALI feedback
- Switch-Dim (Push switch)
- Standby power < 0.5W
- No-load power < 0.5W
- Insulated terminal cover with cord restraint
- Logarithmic Dimming
- Linear Dimming
- Configurable constant current (CC) output via DIP switches
- Permanent setting memory, protected against loss of power
- Loop-in & loop-out terminal for efficient installation
- Short-circuit Protection
- Overload Protection
- Open-circuit Protection

DALI

- 'Plug n'play DALI' / 'independent DALI' system ready.
- Fully DALI addressable and may be assigned to groups within the limits specified by the DALI protocol or supporting DALI controllers by using a DALI programming tool.



Warning: Please make sure the correct current is selected before starting the driver!

SWITCH-DIM

The provided Switch-Dim interface allows for a simple dimming method using commercially available non-latching (momentary) wall switches. Up to 64 LED drivers maybe connected to one switch.

Switch Action	Response
Short press (<0.4 second)	Toggle light on / off
Note: short press has to be longer	
Long press (>0.4 second)	Toggle dim light / increase brightness

Synchronization

Switch Action	Response
Long press (>15 seconds)	All lights will dim down to minimum then return to 50% brightness

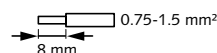
*) We recommend the number of drivers connected to a switch does not exceed 64 pieces. The maximum length of the wires from push to driver should be no more than 20 meters.

WIRING

See image E for Dali and Switch-Dim wiring diagrams.

Preparation

To make or release the wire from the terminal, use a screw-driver to push down the button.



SPECIFICATIONS

Rated voltage	220-240V AC, 50/60Hz
Rated current	0.24~0.22A
Max. output power /current/voltage	3.5-19W/350mA/10-54V 5-27W/500mA/10-54V 6-32W/600mA/10-54V 7-38W/700mA/10-54V 8-42W/800mA/10-52V 9-45W/900mA/10-50V 9.5-45W/950mA/10-47V 10-45W/1000mA/10-45V 10.5-44W/1050mA/10-42V
Power factor	≥0.95
Operating temperature	Ta: -20... +45°C Tc: +80°C
Max. efficiency	≥88%
Dimming interface	DALI, Switch-Dim, 10-54V
Dimming range	1-20% PWM dimming; 20-100% analogue dimming.
EMC standard	EN55015, EN61547, EN61000-3-2/3
Safety standard	EN61347-1, EN61347-2-13
DALI standard	IEC62386-101 IEC62386-102 IEC62386-207
Dims	See fig. C and D
IP rating	IP20
Dielectric strength	Input-output: 3000VAC / 5mA /1min

MALMBERGS

Malmbergs Elektriska AB, PO Box 144, SE-692 23 Kumla, SWEDEN

Phone: +46 (0)19 58 77 00 Fax: +46 (0)19 57 11 77 info@malmbergs.com www.malmbergs.com