

**Product data**

Product code	<b>VC05-0023</b>	STK-code	<b>1914119</b>	EAN-code	<b>6410019141191</b>
Product name	OTL-connector 1xAl/Cu 120mm <sup>2</sup> (Blue)				
Wires	1xAl/Cu 120mm <sup>2</sup>				

**Technical data**

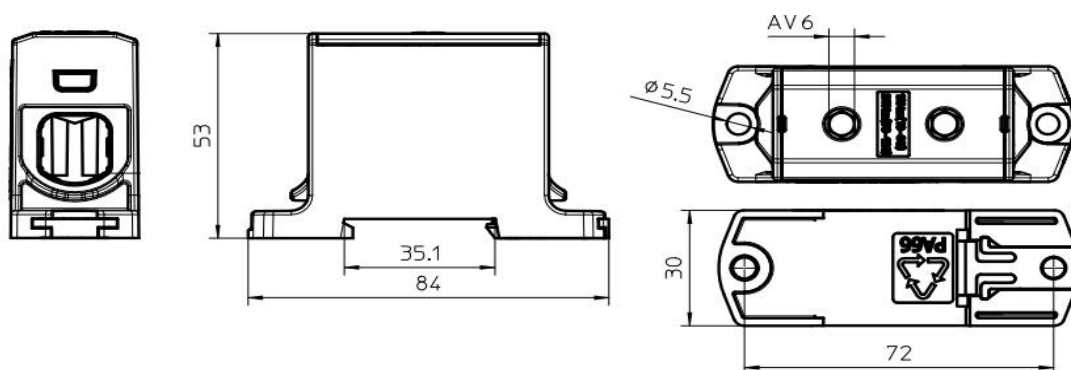
Nominal current	Cu	<b>280</b>	A
	Al	<b>250</b>	A
Nominal voltage		<b>1000</b>	V
Max. Current (US)	Cu	-	A
	Al	-	A
Max. Voltage (US)		-	V
Number of pole		<b>1</b>	pcs
Max. Cross section		<b>120</b>	mm <sup>2</sup>
Tightening torque	16-35 mm <sup>2</sup>	<b>12</b>	Nm
	50-120 mm <sup>2</sup>	<b>25</b>	Nm
	-	-	Nm
	-	-	Nm
Max. Operating temperature		<b>80</b>	°C
Weight		<b>85</b>	g
IP-protection		<b>IP20</b>	



Standards	<b>EN 61238-1; EN60947-7-1</b>
Color/ Material-flame rating	<b>Blue RAL 5015/ PA66-V0</b>
Mounting/ Connection	<b>DIN-rail and screw (M5) mounting</b>

**Description**

OTL-connectors are designed to be used connecting and branching aluminium and copper conductors. The body is made of tin plated aluminium.

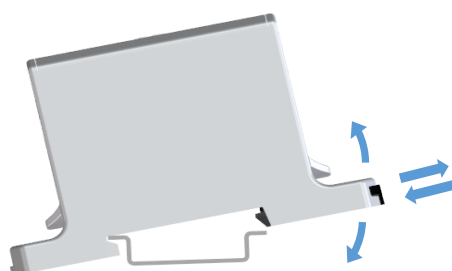
**Drawing**

**Package**

Package	<b>Box</b>	Pcs / Package	<b>15</b>	Weight [kg]	<b>1,45</b>
Length [mm]	<b>210</b>	Width [mm]	<b>155</b>	Height [mm]	<b>105</b>

Product data							
Product code	Product name	$I_n$ Al	$I_n$ Cu	$U_n$	US specific		
					$I_{max}$ Al	$I_{max}$ Cu	$U_{max}$
<b>VC05-0022</b>	OTL-connector 1xAl/Cu 120mm <sup>2</sup> (Grey)	250 A	280 A	1000 V	-	-	-
<b>VC05-0023</b>	OTL-connector 1xAl/Cu 120mm <sup>2</sup> (Blue)	250 A	280 A	1000 V	-	-	-
<b>VC05-0024</b>	OTL-connector 1xAl/Cu 120mm <sup>2</sup> (Yellow/Green)	250 A	280 A	1000 V	-	-	-

## Installation

Type	DIN-rail and screw (M5) mounting
------	----------------------------------




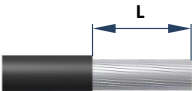
**DIN-rail mounting**  
 Set the connector to DIN-rail.  
 See picture. Push until "click"  
**Removing**  
 Release the slider and lift connector



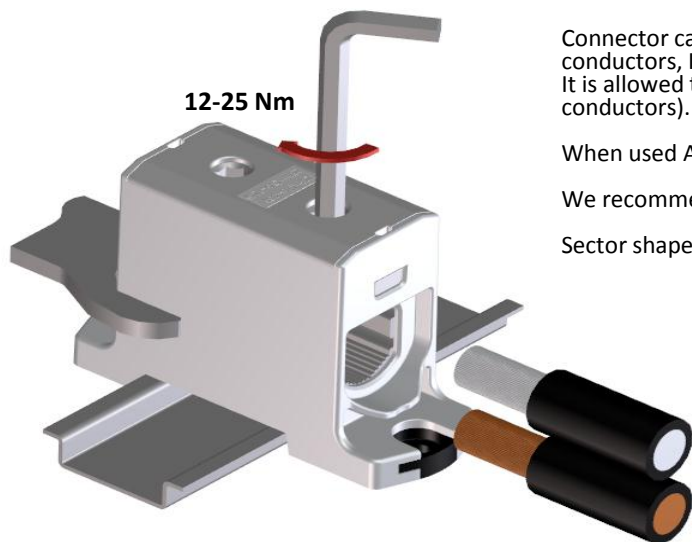
**Screw mounting**  
 Use max. Ø5 mm screw.  
 See picture .



## Connection

Screw 	Thread	<b>M14</b>	Tightening torque	16-35 mm <sup>2</sup>	<b>12 Nm</b>	Stripping length L 
	SW	<b>6</b>		50-120 mm <sup>2</sup>	<b>25 Nm</b>	
				-	-	
				-	-	
Max. Wire cross section					<b>120 mm<sup>2</sup></b>	

### Installation



Connector can be used for both **copper- or aluminium conductors**. With the Al-conductors, It's recommended to use anti-corrosion paste. (e.g. Penetrox). It is allowed to use max. of three adjacent cross sections in one space (Copper conductors). The nominal max. cross section value must not be exceeded.

When used Al-conductors, it is allowed to use only one conductor/space.

We recommend a ferrule when using a fine-stranded conductor.

Sector shaped conductors must be pre-rounded before installation.

Each protective or neutral conductor must have their own conductor space. SFS 6000:2007 clause 810.7

## Cross section and max. number of Cu- conductors / space (Al- conductors in parenthesis)

1,5 mm2	2,5 mm2	6 mm2	10 mm2	16 mm2	25 mm2	35 mm2	50 mm2	The specified max. amount of conductors refers only to industrially installed terminals.			
-	-	-	-	3 (1)	3 (1)	3 (1)	2 (1)				
				70 mm2	95 mm2	120 mm2	150 mm2	185 mm2	240 mm2	300 mm2	400 mm2
				1 (1)	1 (1)	1 (1)	-	-	-	-	-